

# City of Newcastle

Newcastle 2040

## Community Strategic Plan

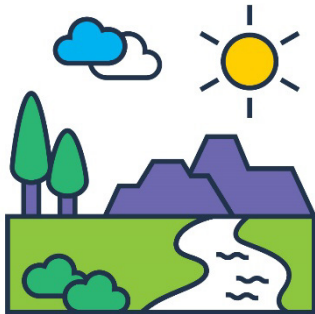
Easy Read version



# Acknowledgement of Country



We recognise the Awabakal and Worimi peoples as the First People of Newcastle.



They have always looked after Country.

Country means the land, water, sky and everything within them.



We respect the important connection that Aboriginal and Torres Strait Islander peoples have with Country.



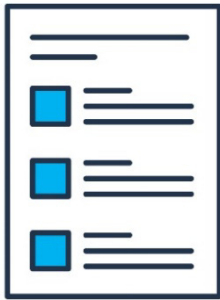
And we respect their Elders from the past and now.

## How to use this plan



We are the City of Newcastle.

We wrote this plan with other community organisations and people in Newcastle.



We wrote some words in **bold**.

We explain what these words mean.

There is also a list of these words on page 24.



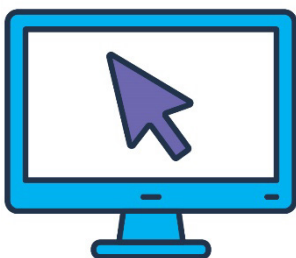
You can ask someone you trust for support to:

- read this plan
- find more information.



This is an Easy Read summary of another plan.

It only includes the most important ideas.



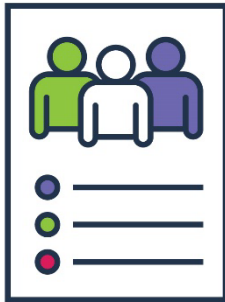
You can find the other plan on our website.

[www.newcastle.nsw.gov.au/about-us/  
our-responsibilities/newcastle-2040](http://www.newcastle.nsw.gov.au/about-us/our-responsibilities/newcastle-2040)

# What's in this plan?

About our plan	5
How we made our plan	8
What we heard	10
What our plan focuses on	12
1. Build an accessible and inclusive community	13
2. Care for our environment	15
3. Create opportunities to take part	17
4. Work together	19
Making sure our plan works well	22
Contact us	23
Word list	24

## About our plan



We worked with the community to create a Community Strategic Plan called Newcastle 2040.

We call it our plan.



Our plan is about how we want our community to grow before 2040.



This includes how we can make our community more **inclusive**.



When our community is inclusive, everyone:

- can take part
- feels like they belong.



This also includes how we can make our community more **accessible**.



When a community is accessible, it's easy to:

- find and use services
- move around.

For example, it's easy to use:

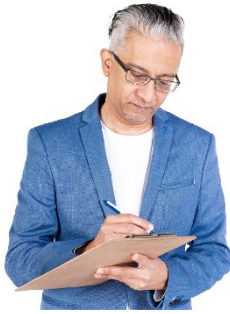


- public transport



- parks and buildings.

Our plan includes things for:



- us to do

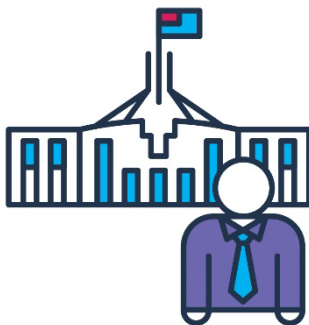


- us to work together on.

For example, we will work together with:

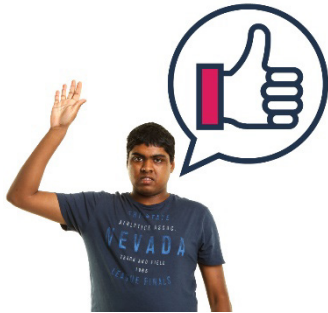


- organisations in our community



- other parts of the government.

## How we made our plan

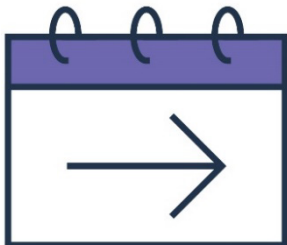


We asked people in the community to share ideas about how we can make Newcastle better.

We also asked people to share:



- what we need to focus on



- how this will support the community in the future.



We heard from many people in Newcastle.



People shared their ideas with us in different ways.

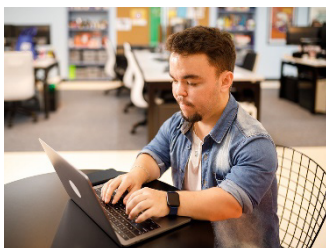
This included:



- community workshops



- events and activities



- online surveys.

## What we heard

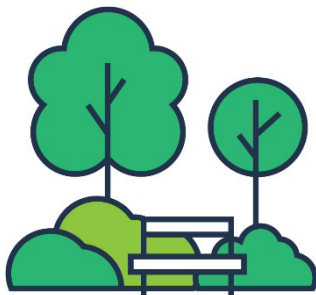


We heard that people want a more safe and accessible community.



We heard that people want a community that cares for the environment.

For example, a community that:



- has more trees and green spaces



- manages rubbish the right way.



We heard that people want more inclusive community activities and events.



For example, events that celebrate people with different ideas and experiences.

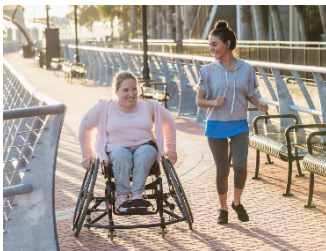


We heard that people want to keep sharing their ideas and get the support they need to share their ideas.

# What our plan focuses on



Our plan focuses on 4 important areas.



1. Build an accessible and inclusive community



2. Care for our environment

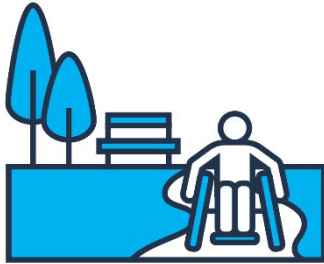


3. Create opportunities to take part



4. Work together

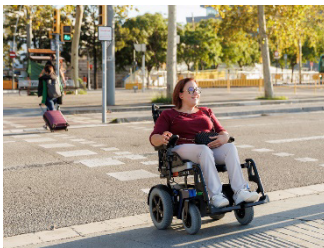
# 1. Build an accessible and inclusive community



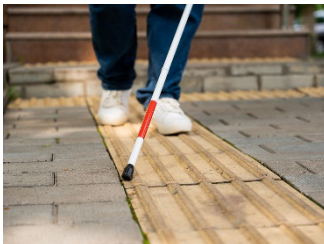
We want everyone to be able to move around the community safely and easily.

## What we will work together to do

We will look for ways to improve:



- roads



- footpaths and bike lanes



- public transport.

We will also look for ways to:



- support people to find cheaper housing



- support designs for more accessible public spaces.

## 2. Care for our environment

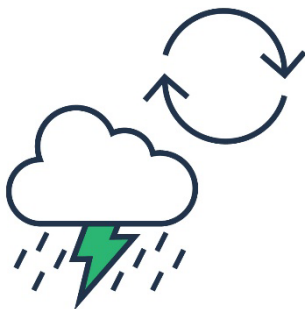


We want a community that helps to protect the environment.

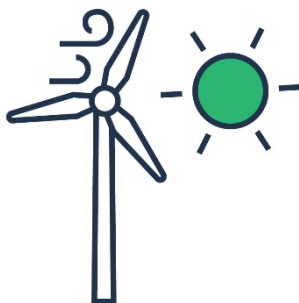
### What we will work together to do



We will take actions against **climate change**.



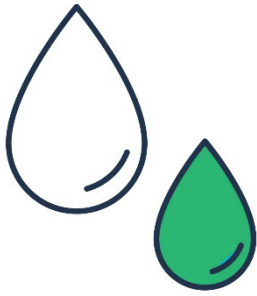
Climate change is when the weather changes over a long time because we don't take care of our environment.



For example, we will use power that:

- doesn't harm the environment
- comes from nature, like the sun or wind.

We will also try to:



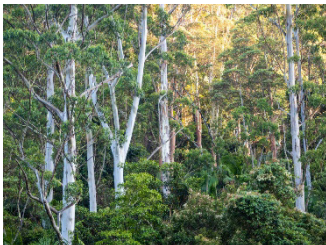
- use less water



- buy things that are made locally.



This means we don't make as much pollution bringing things from far away.



We will protect nature and help it to grow in our community.

For example, our forest.

### 3. Create opportunities to take part



We want everyone to:

- take part in the community
- feel like they belong to the community.

#### What we will work together to do



We will make sure more events are:

- accessible
- inclusive.



We will offer more inclusive opportunities to learn and work.



For example, we will support people who speak a language other than English.



We will support people to share their different ideas and experiences.



For example, people with different abilities or backgrounds.

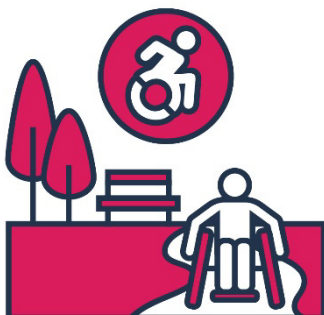


We will support people to treat others:

- fairly
- equally.



We will create more opportunities for people to have healthy lives.



For example, we will make parks and public spaces more accessible.

## 4. Work together



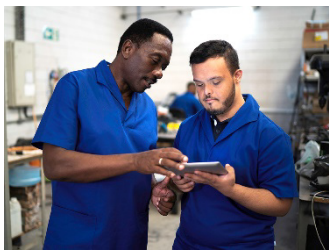
We want all parts of our community to work together so everyone gets the support they need.

### What we will work together to do



We will keep improving how we plan community projects with people in the community.

We will support people to:



- learn new skills



- work and earn money.

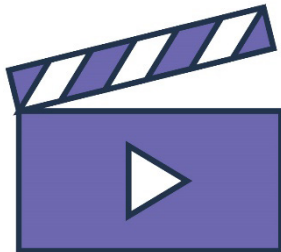


We will make sure the people we want our plan to support get to have a say in our decisions.

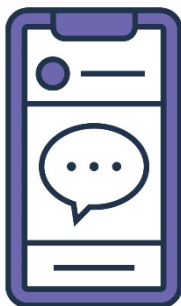


We will share our decisions in accessible ways.

For example:



- videos

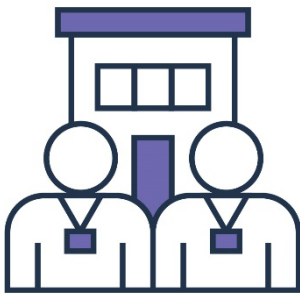


- posts on social media – like Instagram.



We will build trust with our community by:

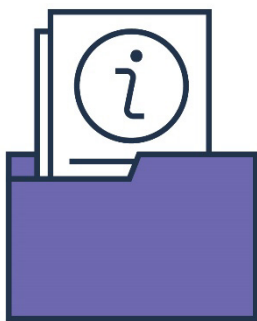
- doing what we say we will
- treating everyone fairly.



We will work with other organisations to improve services in the community.



We will use **data** to make decisions about how to support the community.



Data includes information and facts we collect to help us learn about something.

## Making sure our plan works well



We will keep track of how our plan is going.



We will report on how our plan is going every 4 years.

This report includes:



- what we did well



- what was hard to do



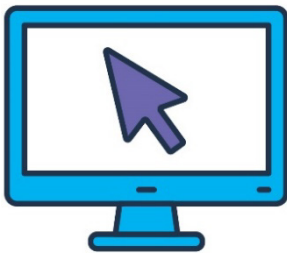
- what we still need to do.

## Contact us



You can call us.

02 4974 2000

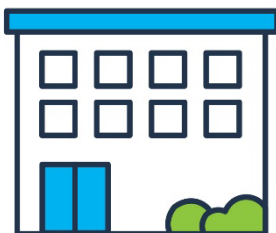


You can visit our website.

[www.newcastle.nsw.gov.au/about-us/contact-us](http://www.newcastle.nsw.gov.au/about-us/contact-us)



You can talk to us online using our webchat feature.



You can visit us.

12 Stewart Street, Newcastle West.



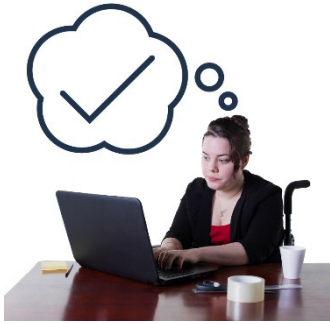
You can write to us.

PO Box 489

Newcastle 2300

## Word list

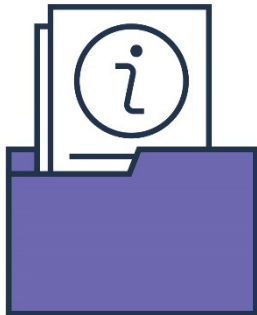
This list explains what the **bold** words in this plan mean.



### **Accessible**

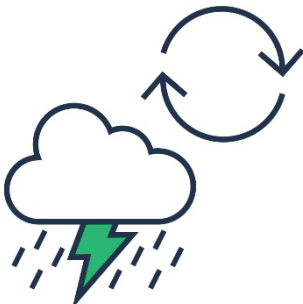
When a community is accessible, it's easy to:

- find and use services
- move around.



### **Data**

Data includes information and facts we collect to help us learn about something.



### **Climate change**

Climate change is when the weather changes over a long time because we don't take care of our environment.



## **Inclusive**

When our community is inclusive, everyone:

- can take part
- feels like they belong.



The Information Access Group created this Easy Read document using stock photography and custom images.

The images may not be reused without permission.

For any enquiries about the images, please visit

[www.informationaccessgroup.com](http://www.informationaccessgroup.com).

Quote job number 6603.